

**Andreu
World**
Outdoor



Andreu
World
Outdoor

2023 NEW OUTDOOR DESIGNS



ANDREU WORLD

Welcome to Andreu World's latest Outdoor collections, where every seat and table seeks the essence of nature, creativity, sustainability and wellbeing. Each piece is a fusion of craftsmanship and functionality, with wood and sustainable materials featuring in timeless designs that transcend the seasons. The comfort of the interior extends to the outdoors, creating a haven of elegance and relaxation under the open sky.

Nowadays we could say that almost all the companies in our sector want to occupy a part of that space, which we agree to call outdoors. So have we, for quite a few years now. We started to take the furniture out to the porch or the garden to bring the comfort of the interior to the outside. In both domestic and contract projects. Over time we have continued to do so with the same idea and now we are expanding our collections.



NEW DESIGNS

- 36 Afuera Modular Sofa
- 56 Dado Outdoor
- 66 Liceo Outdoor
- 46 Nilo Modular Sofa

NEW VERSIONS

- 94 Costa Chair
- 98 Gala Pure ECO®
- 82 Sand
- 72 Siesta
- 88 Trenza
- 106 Proa
- 103 Reverse Wood
- 104 Reverse Conference
- 108 Solid
- 110 Status
- 112 Wind
- 116 Materiales

We are committed to the good life and we do it with the advantage of being Mediterranean. We carry this tradition in our genes and we know that a better relationship with the environment, besides being a good idea, also helps us to value it more. Preserving it is the responsibility of all manufacturers. We have set out to lead the way in this sustainability, and each of the designs that follow can serve as an example.

07

The seating range begins with the Afuera collection, which immerses us in the essence of Japanese-style comfort, with solid iroko beams and upholstery that redefines the art of relaxing outdoors. Trenza, inspired by the hues of the Mediterranean, interweaves new colors, capturing the spirit of the Mediterranean.

Nilo, inspired by the Orient, is a modular system that fuses elegance and functionality. Siesta, with its steel structure, is adaptable to any space, providing harmony and style. Liceo Outdoor, is a work of craftsmanship and technology that combines sustainability and aesthetics, while Gala Pure ECO[®] is an ode to modernity, sculpted in 100% recycled and recyclable thermopolymers.

Costa brings the harmony of lightness and comfort with its new stools. Outdoor tables offer endless possibilities in collections such as Reverse Wood Outdoor, with a new FSC[®] 100% certified iroko base, adapting to every corner. Color options are also expanded for the Solid, Status and Proa collections, made of Pure ECO[®] thermopolymer.

























Siesta (SF4750 + RS4754 + 2SF4750 + SF4755) Dual Occasional (ME6494 + ME6509)



















Gala Pure ECO® (S00724) Dado Outdoor® (BU2370 + BU2371 + RS2382)









Manufacturing for a better world

Outdoor furniture requires resistant and reliable materials for outdoor use.

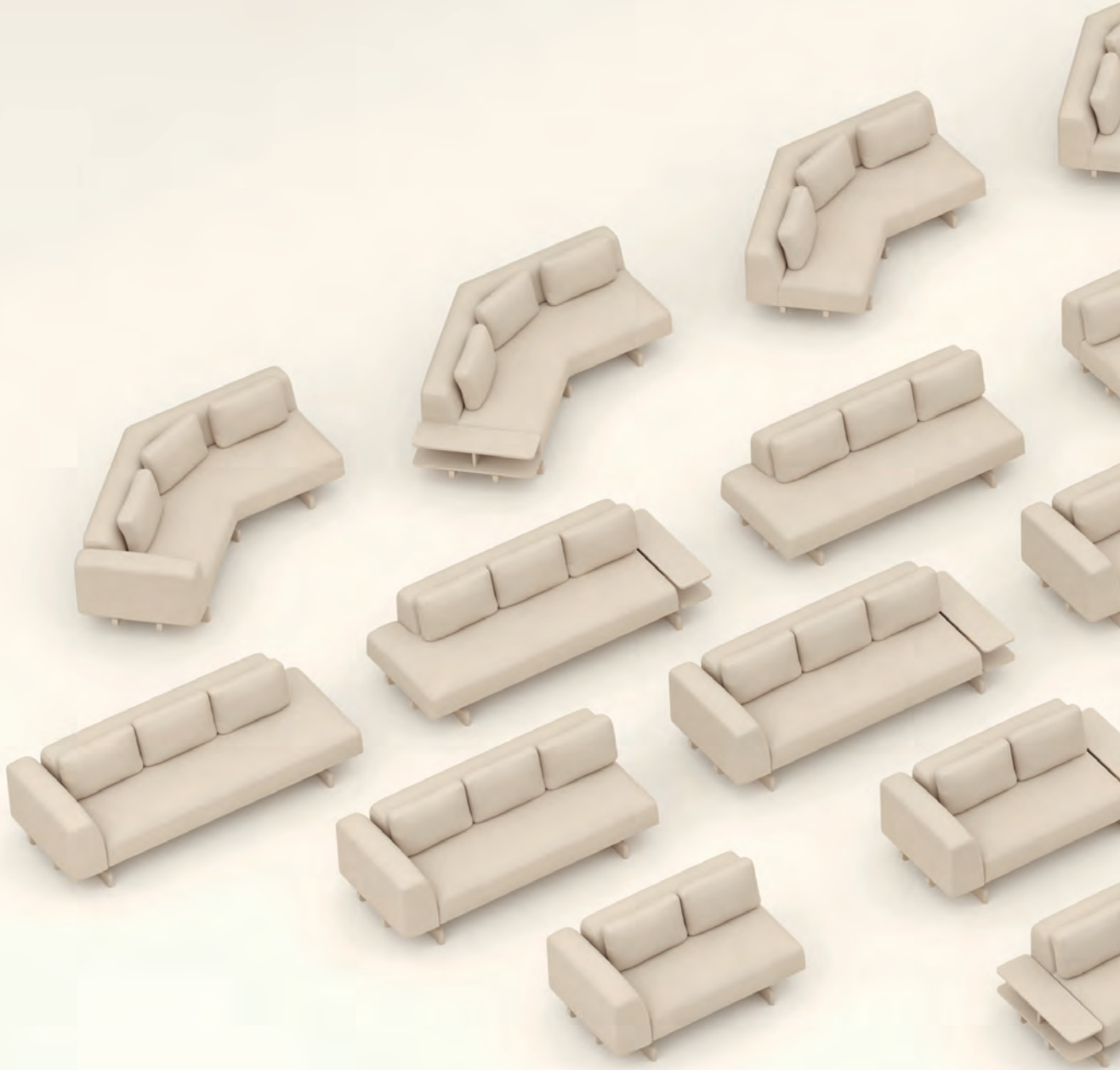
We have developed a special treatment for metal, called EPL5, which provides maximum protection against corrosion and UV rays. It is a process similar to those used in the marine and automotive industries. Technically, it is the sum of phosphating, electrolytic finishing and a polyester varnish.

A 100% sustainable coating that molecularly fuses with the metal and also provides enhanced resistance to impact, deformation and chemicals. The result guarantees a long life span for our products, which can withstand the most adverse weather conditions and intensive outdoor use, without the need for demanding maintenance, just soap and water.

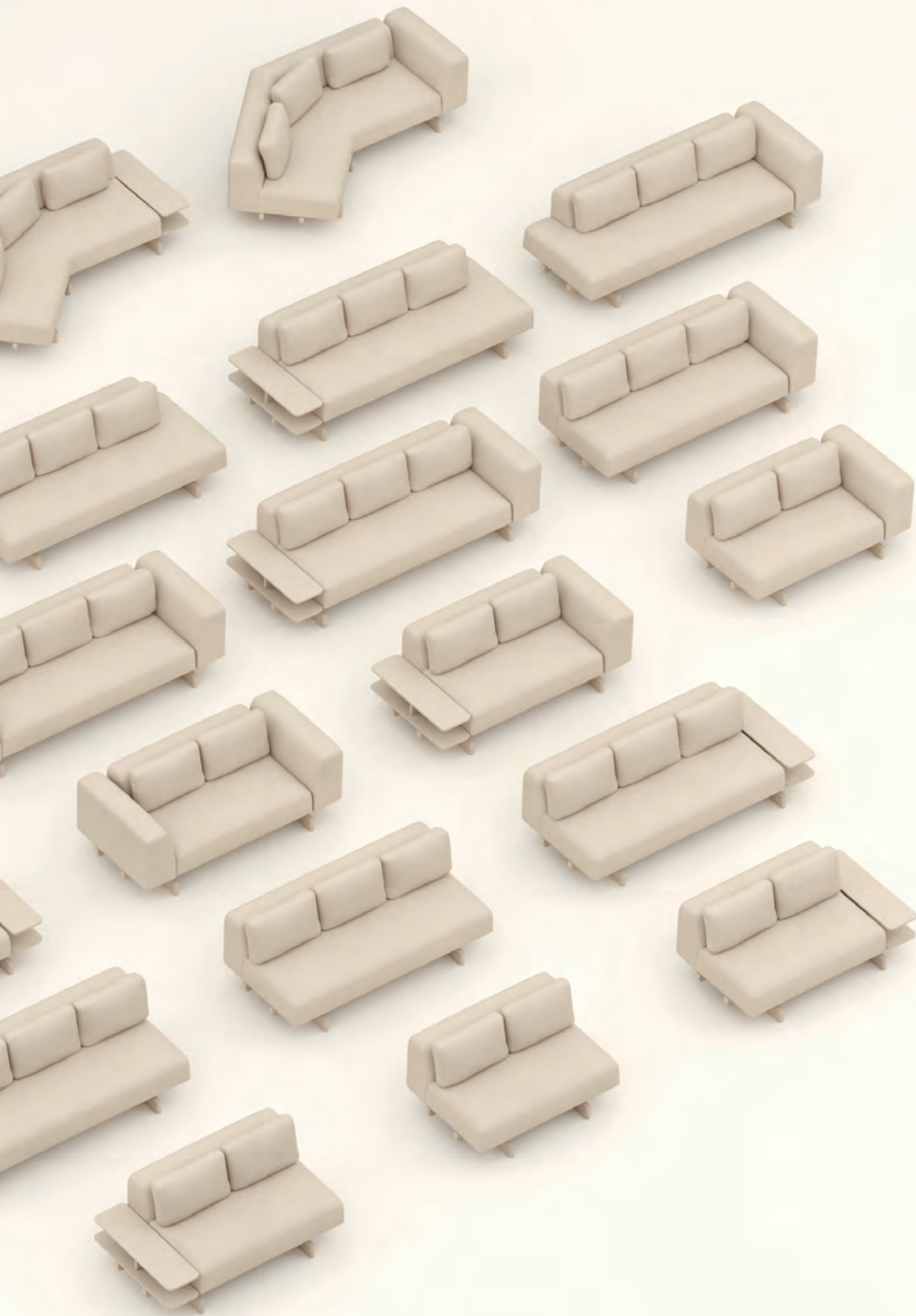
All the other materials we use are sustainable, have the FSC® 100% guarantee in the case of wood and are PVC-free.

All of our Outdoor products are LEVEL 3® certified, which guarantees a transparent assessment of the environmental and social impacts of furniture manufacturing.

Moreover, the Indoor Air Quality seal certifies that the furniture we manufacture does not produce harmful emissions. Both are essential for creating a healthy and productive indoor and outdoor environment.



AFUERA MODULAR SOFA



AFUERA MODULAR SOFA

38



ALFREDO HÄBERLI

Afuera Modular Sofa

Alfredo Häberli

An extraordinary sofa, comfortable, modular and very spacious. It is inspired by the construction of traditional Japanese shoes, featuring an iroko wood platform composed of two beams that intersect with two skates, creating a surprising geometry. Its attractive contrast of materials and geometries conveys a distinctive character.

Designed to offer the comfort of an indoor sofa, Afuera features unique details. The detail of its sewing, with an elaborate zigzag design and made of white thread, is a characteristic sign of this collection, highlighting the excellence in the work and its particular upholstery technique.

With a wide variety of linear, angled, hexagonal, or “U” or “zigzag” configurations, Afuera adapts to various uses and needs. Iroko wood, in a natural tone, providing naturalness, warmth and material character to the sofa. The versatility, comfort and great combinations of Afuera make it a functional solution for both outdoors and indoors, being an attractive and high-quality option for those looking for furniture adaptable to different spaces and needs.

AFUERA MODULAR SOFA

40



ALFREDO HÄBERLI



AFUERA MODULAR SOFA

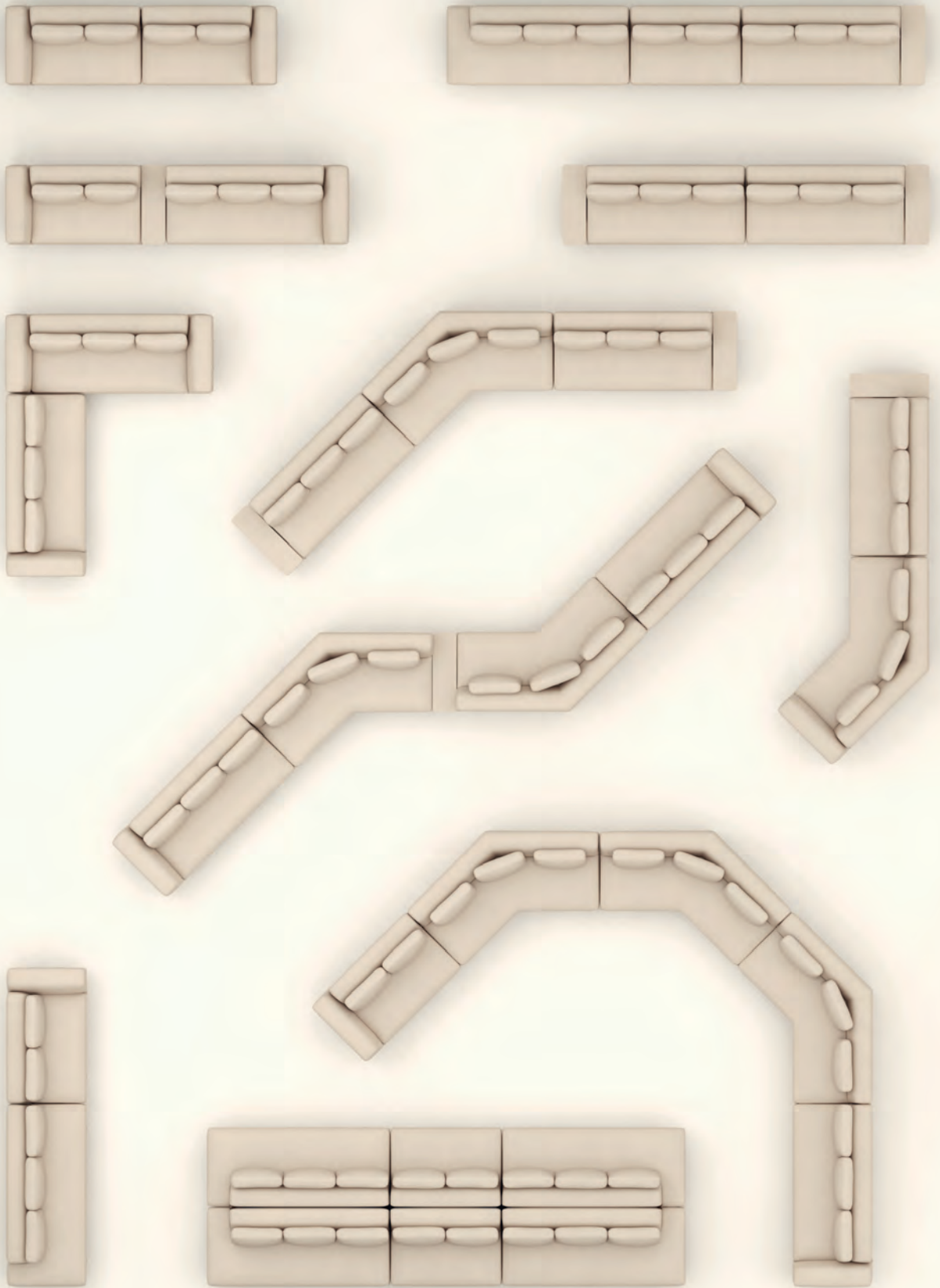
42



ALFREDO HÄBERLI



AFUERA MODULAR SOFA



ALFREDO HÄBERLI



SF2461

2-seater sofa with upholstered seat, back and arms. Solid iroko wood base. The sofa comes with back cushions (x2 units).



SF2462

2-seater sofa with upholstered seat, backrest and left arm. Base and right side table made of solid iroko wood. The sofa comes with back cushions (x2 units).



SF2463

2-seater sofa with upholstered seat, backrest and right arm. Base and left side table made of solid iroko wood. The sofa comes with back cushions (x2 units).



SF2464

2-seater sofa with upholstered seat, backrest and right arm. Base and left side table made of solid iroko wood. The sofa comes with back cushions (x2 units).

FSC® iroko wood platform. Its unique design, supported by two iroko beams and skid bases, creates a surprising geometry. This versatile system offers multiple customization options for unlimited compositions in outdoor spaces. Configurations include lines, angles, hexagonal, “U” or “S”.



SF2465

2-seater terminal module with upholstered seat, backrest and right armrest. Solid iroko wood base. The sofa comes with back cushions (x2 units).



SF2466

2-seater terminal module with upholstered seat and backrest. Base and left side table made of solid iroko wood. The sofa comes with back cushions. (x2 units).



SF2467

2-seater terminal module with upholstered seat and backrest. Solid iroko wood base. The sofa comes with back cushions (x2 units).



SF2468

2-seater terminal module with upholstered seat and backrest. Base and right side table made of solid iroko wood. The sofa comes with back cushions (x2 units).

Iroko wood in natural tone provides naturalness and warmth. In addition, iroko side tables can be added at different heights for greater functionality and connection between upholstered modules. The iroko wood , 100% FSC certified, has an innovative protective treatment to resist external conditions.



SF2469

3-seater sofa with upholstered seat, back and arms. Solid iroko wood base. The sofa comes with back cushions (x3 units).



SF2470

3-seater sofa with upholstered seat, backrest and left arm. Base and right wooden side table made of solid iroko. The sofa comes with back cushions (x3 units).



SF2471

3-seater sofa with upholstered seat, backrest and right arm. Base and left side table made of solid iroko wood. The sofa comes with back cushions (x3 units).



SF2472

3-seater terminal module with upholstered seat, backrest and left armrest. Solid iroko wood base. The sofa comes with back cushions (x3 units).



SF2473

3-seater terminal module with upholstered seat, backrest and right armrest. Solid iroko wood base. The sofa comes with back cushions (x3 units).



SF2474

3-seater terminal module with upholstered seat and backrest. Base and left side table made of solid iroko wood. The sofa comes with back cushions (x3 units).



SF2475

3-seater terminal module with upholstered seat and backrest. Base and right side table made of solid iroko wood. The sofa comes with back cushions (x3 units).



SF2476

3-seater terminal module with upholstered seat and backrest. Solid iroko wood base. The sofa comes with back cushions (x3 units).



SF2477

3-seater left island terminal module with upholstered seat, backrest and left armrest. Solid iroko wood base. The sofa comes with back cushions (x3 units).



SF2478

3-seater left island terminal module with upholstered seat and backrest. Base and left side table. Made of solid iroko wood. The sofa comes with back cushions (x3 units).



SF2479

3-seater left island terminal module with upholstered seat and backrest. Solid iroko wood base. The sofa comes with back cushions (x3 units).



SF2480

3-seater right island terminal module with upholstered seat, backrest and right armrest. Solid iroko wood base. The sofa always has back cushions (x3 units).



SF2481

3-seater right island terminal module with upholstered seat and backrest. Base and right side table made of solid iroko wood. The sofa comes with back cushions (x3 units).



SF2482

3-seater right island terminal module with upholstered seat and backrest. Solid iroko wood base. The sofa comes with back cushions (x3 units).



SF2483

3-seater 45° angular terminal module with upholstered seat, backrest and left armrest. Solid iroko wood base. The sofa comes with back cushions (x3 units).



SF2484

3-seater 45° angular terminal module with upholstered seat, backrest and right armrest. Solid iroko wood base. The sofa comes with back cushions (x3 units).



SF2485

3-seater 45° angular terminal module with upholstered seat and backrest. Base and left side table made of solid iroko wood. The sofa comes with back cushions (x3 units).



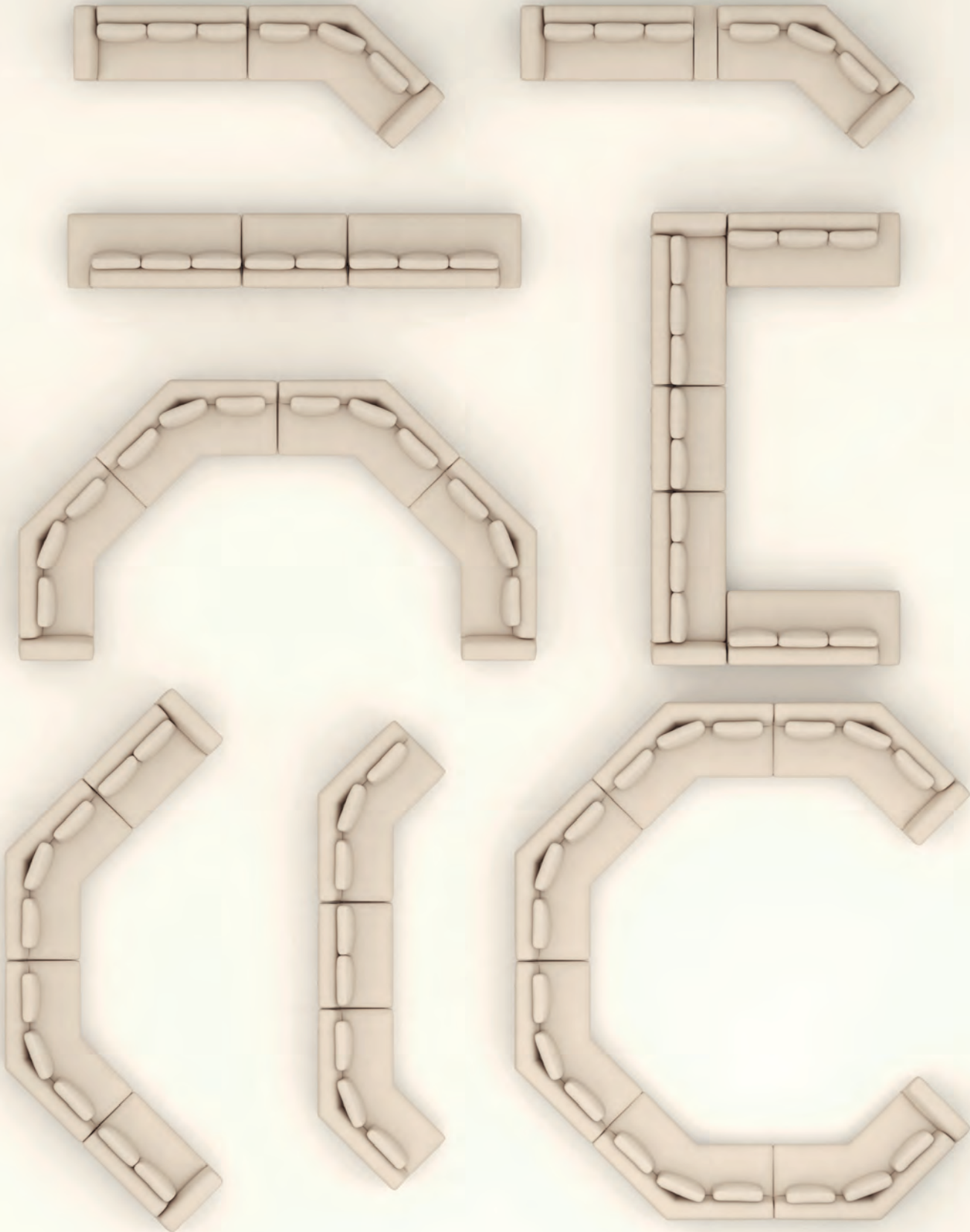
SF2486

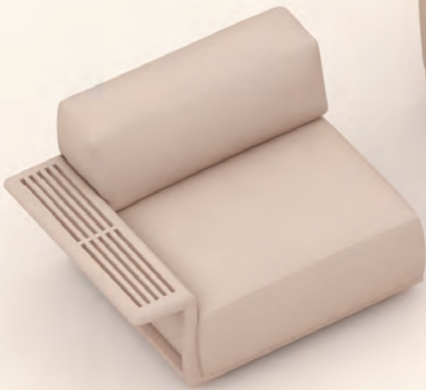
3-seater 45° angular terminal module with seat and upholstered backrest. Base and right side table made of solid iroko wood. The sofa comes with back cushions (x3 units).



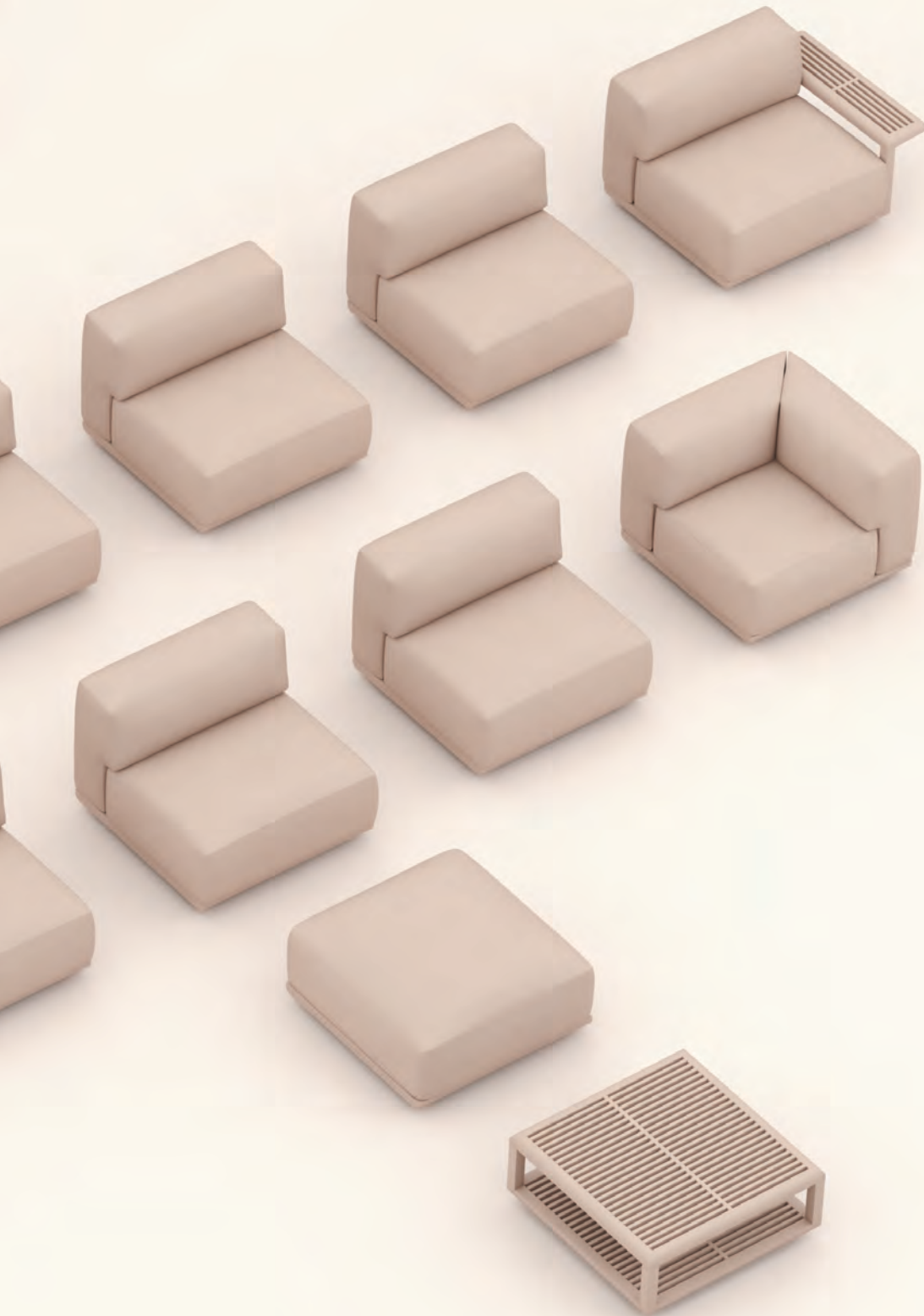
SF2487

3-seater 45° angular terminal module with upholstered seat and backrest. Base and right side table made of solid iroko wood. The sofa comes with back cushions (x3 units).





NILO MODULAR SOFA



NILO MODULAR SOFA

48



PIERGIORGIO CAZZANIGA

Nilo Modular Sofa

Piergiorgio Cazzaniga

With an elegant and comfortable aesthetic, Nilo Modular Sofa is inspired by oriental culture and stands out for its iroko wood structure.

Adopting a modular approach, it combines upholstered cushions with a wooden structure to create a unique proposal that highlights the natural and elegant beauty of the sofa. The iconic design of the wooden arms and the side table generate a visual game of transparencies, characterizing the collection and evidencing the detailed elaboration of the wood.

In summary, the Nilo sofa is distinguished by its modular design and the use of iroko wood in its structure, giving it an elegant appearance and functionality ideal for outdoors. The combination of materials, the meticulous woodwork and the arrangement of independent cushions make this sofa an attractive and versatile option for creating cozy outdoor spaces.

Due to its characteristics, the Nilo sofa is presented as a functional and versatile solution for outdoor spaces, whether public or private, without giving up its elegant aesthetics, which also makes it suitable for indoor use.

The modular sofa system offers versatility and multiple configuration options, allowing you to create personalized compositions that define and organize spaces. It is available in different versions of armchair, 2-seater sofa and 3-seater sofa, as well as in a wide variety of modules with 30, 60 or 90 degree curves, straight segments and chaise longue modules.

NILO MODULAR SOFA

50



PIERGIORGIO CAZZANIGA



NILO MODULAR SOFA

52



PIERGIORGIO CAZZANIGA



NILO MODULAR SOFA



Nilo is a modular sofa system that offers great versatility through different versions of straight terminal modules with wooden arm, intermediate, backless or corner seat and table seat. Its construction is based on a solid base of 100% FSC® iroko wood and a backrest structure of treated outdoor steel.

The upholstered cushions stand out, generous and comfortable, visually connected to enhance the architectural effect. The distinctive arm, made up of wooden slats, adds character and functionality, allowing efficient water drainage. The detail of its sewing, with an elaborate box-shaped design and made of white thread, becomes an identifying sign of this collection.



SF2388

Modular Sofa with upholstered seat and backrest and solid iroko wood structure.



SF2389

Modular sofa with upholstered seat and backrest and structure and arm (left side) in solid iroko wood.



SF2390

Modular sofa with upholstered seat and backrest and structure and armrest (right side) in solid iroko wood.



SF2391

Modular corner sofa (left side) with upholstered seat and backrest and solid iroko wood structure.

Following the same construction philosophy of serial slats, the Nilo corner table provides functionality and a graphic character to angular sofa compositions. Available in corner table and square occasional table modules, as well as a C-shaped version for added versatility. This piece integrates perfectly into the modular design, offering flexible options to customize any space.



SF2392

Modular corner sofa (right side) with upholstered seat and backrest and solid iroko wood structure.



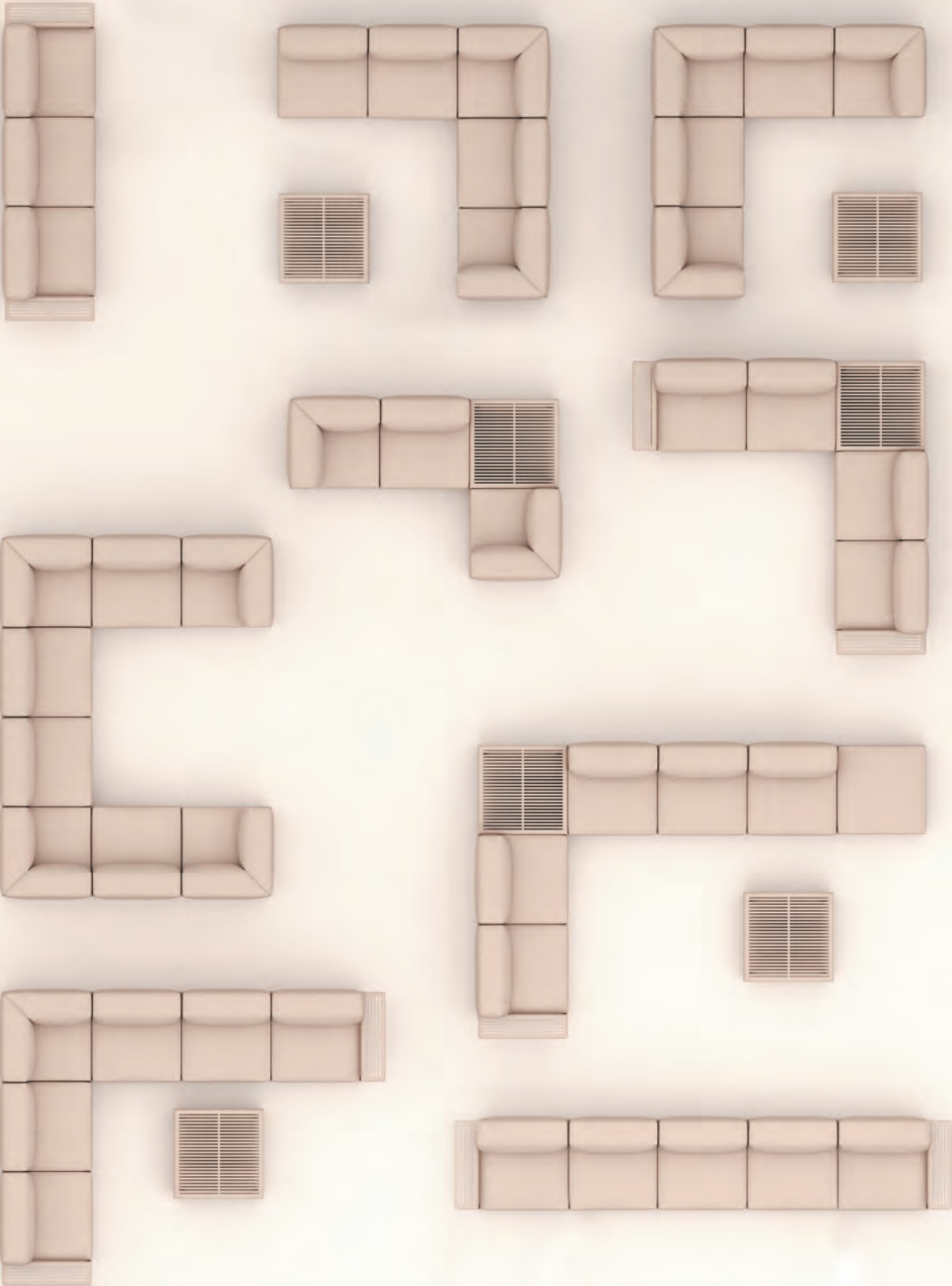
RS2394

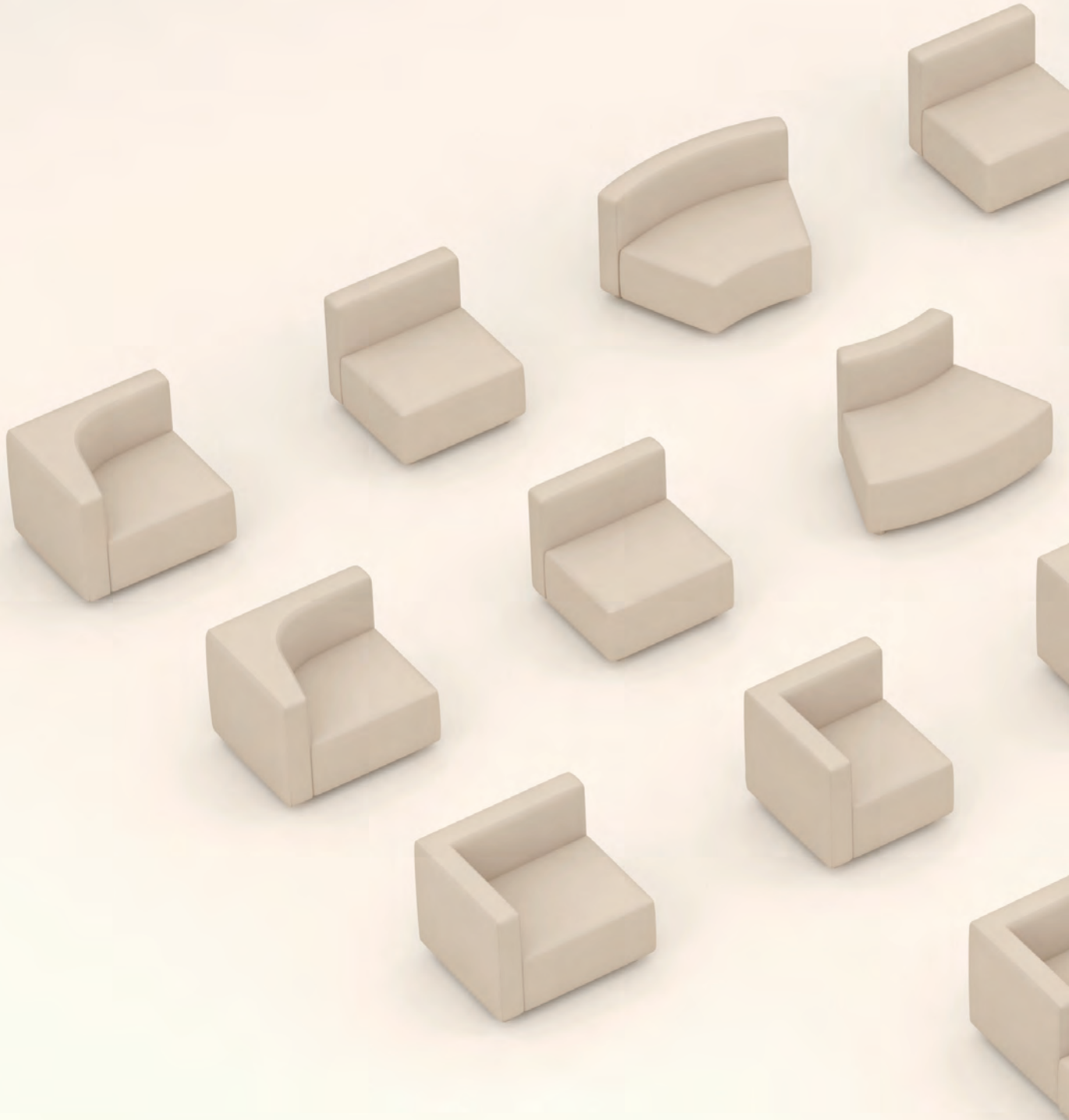
Upholstered footrest with solid iroko wood structure.



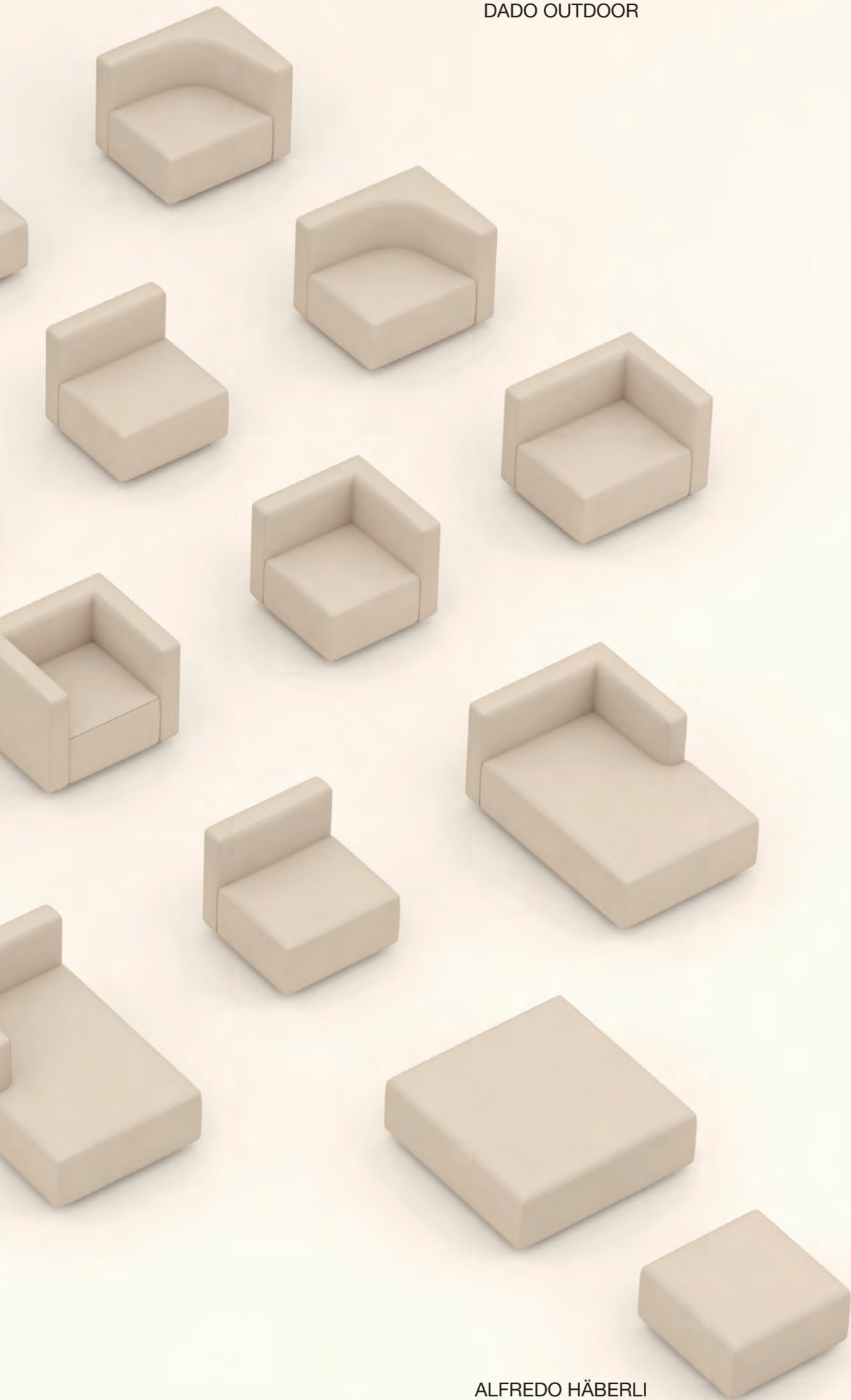
ME2395

Iroko solid wood side table.





DADO OUTDOOR



DADO OUTDOOR

58



ALFREDO HÄBERLI

Dado Outdoor

Alfredo Häberli

The expansion of the Dado Collection with the new Dado Outdoor sofa presents a modular design that guarantees exceptional comfort through a precise play of proportions, volumes and color. Its graphic and essential geometry is enhanced with subtle details in the upholstery, which combines the main fabric, piping and small strips to define the shape of the seat, revealing a haute couture interior upholstery.

Its modularity allows for various combinations with corners, central modules, chaise longue and footrest, adapting to public or private spaces. Its exceptional versatility makes it possible to create varied compositions that organize and define spaces such as terraces or outdoor porches. Manufactured with specific materials for outdoors and cushions with state-of-the-art foams, they allow optimal water drainage and rapid evacuation of moisture, guaranteeing effective drying.

The concept of fully upholstered volumes stands out in Dado, with a unique upholstery technique using panels that shape their geometry and are joined through an elaborate seam. In addition, an internal band in 8 different colors allows you to personalize the sofa with a graphic and distinctive gesture.

DADO OUTDOOR

60



ALFREDO HÄBERLI



DADO OUTDOOR

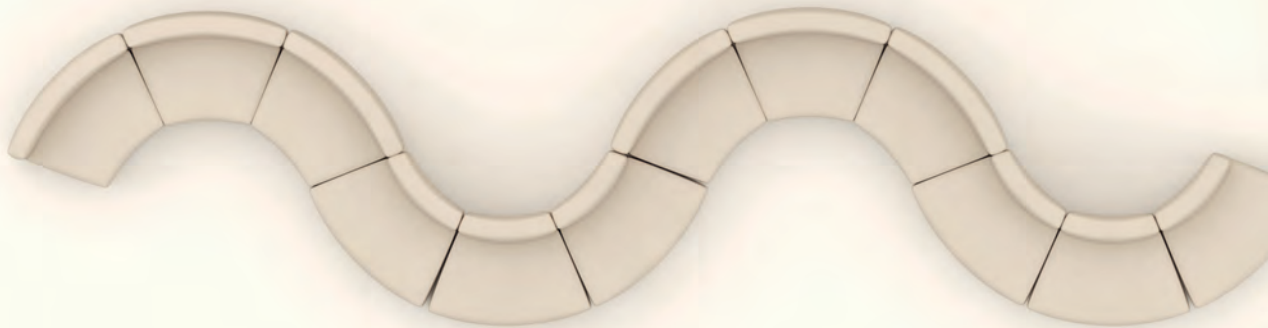
62



ALFREDO HÄBERLI



DADO OUTDOOR



The Dado Outdoor modular sofa redefines versatility with its exceptional modular concept. This sofa adapts to any outdoor space, offering unlimited and flexible compositions. From seats to corner modules and chaise longues, each piece combines perfectly to create unique configurations. With options such as curved modules and ottomans, this sofa guarantees order and style. The auxiliary cushions complement the collection, providing additional comfort in different sizes.



BU2370

Armchair with upholstered seat and backrest.



SF2371

Sofa with upholstered seat and backrest.



SF2372

Corner sofa (right side) with upholstered seat and backrest.



SF2373

Corner sofa (left side) with upholstered seat and backrest.

The Dado Outdoor sofa offers an exceptional variety of modules to personalize the spaces. From an elegant armchair to The versatile central modules can create unique compositions chaise options left or right longue, designing the perfect space for the outdoors.



SF2374

Corner sofa (right side) with upholstered seat and backrest. Wide version.



SF2375

Corner sofa (left side) with upholstered seat and backrest. Wide version.



SF2376

Corner sofa (left side) with upholstered seat and backrest. Wide version.



SF2377

Corner sofa (right side) with upholstered seat and backrest. Wide version.

Designed to withstand the rigors of the outdoors, it uses specific materials and a construction philosophy that ensures its durability. Its structure has autoclave-treated wood, while the cushions incorporate state-of-the-art foams. It stands out for its innovative upholstery, using geometric panels joined by elaborate seams. The internal band, available in 8 colors, adds personality, allowing you to personalize the sofa.



SF2378

Curved modular sofa with upholstered seat and backrest. Open curved version.



SF2379

Curved modular sofa with upholstered seat and backrest. Closed curved version.



SF2380

Modular corner sofa with upholstered seat and backrest. Left side corner.



SF2381

Modular corner sofa with upholstered seat and backrest. Right side corner.

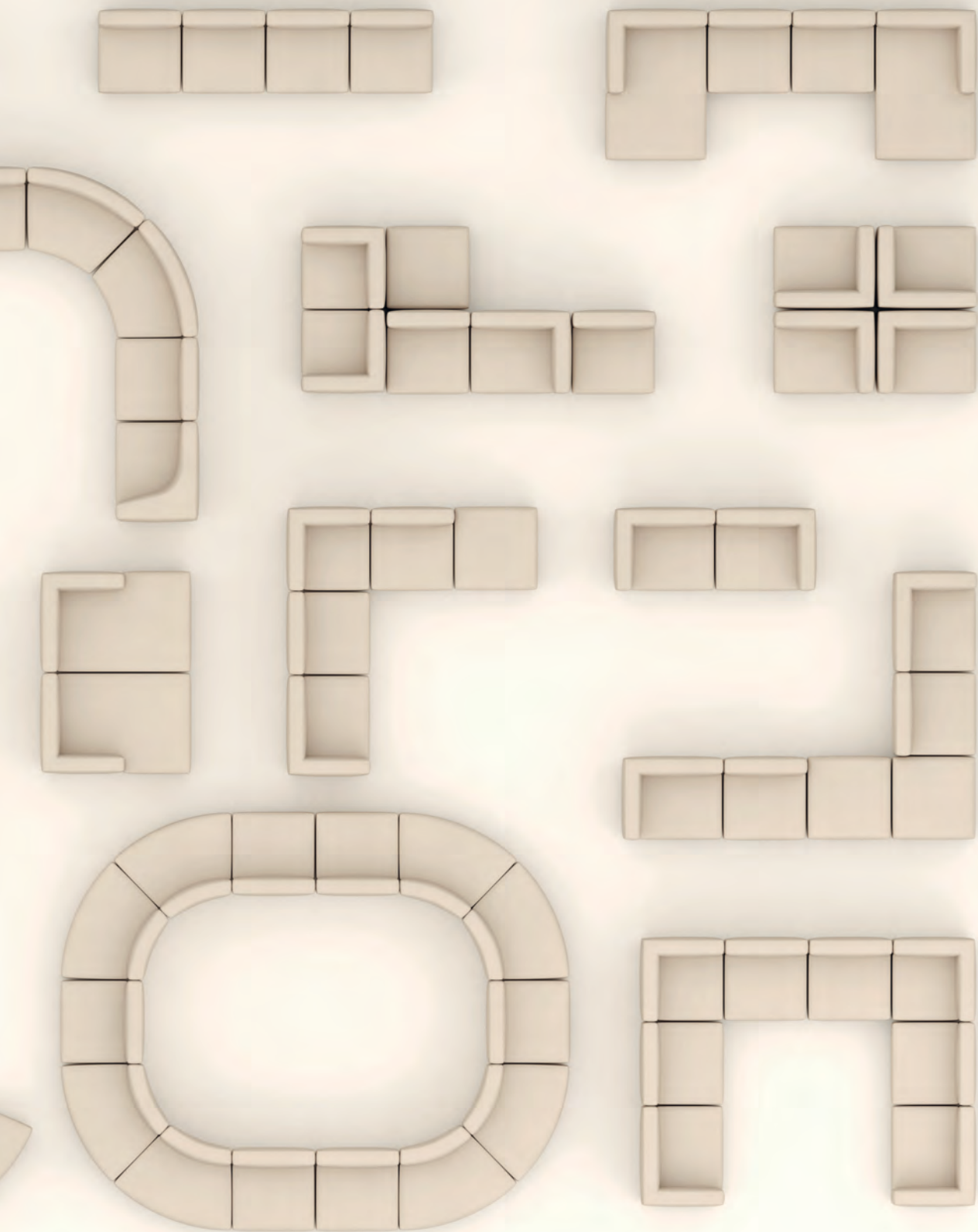
The collection offers two ottoman module widths to create compositions that define and organize spaces.



RS2382
Upholstered ottoman.



RS2383
Upholstered ottoman. Wide version.





Liceo Outdoor

Piergiorgio Cazzaniga

A synthesis of memory and formal beauty, it embodies the elegance of the classics with an undeniably contemporary presence, now in a captivating outdoor version. This meticulous design stands out for the detailed work of 100% FSC iroko wood, which shapes soft curves and suggestive transitions, fusing the tradition of cabinetmaking with the latest 3D machining technology to achieve complex and surprising geometries.

Whether in its armchair or lounge chair version, iroko wood is combined with outdoor rope in the seat, providing an elegant and durable option for outdoor spaces. Liceo Outdoor not only offers comfort and long-lasting style, but also resists inclement weather thanks to an innovative protective treatment that enhances the naturalness of the material and guarantees its resistance to sun and humidity.

Made of solid Iroko wood, they highlight the timelessness of a design built using a curved backrest in only 3 pieces, demonstrating the maximum quality and beauty of the material.

Its apparent simplicity is the result of meticulous work that highlights the value and timelessness of wood, using cutting-edge machining technology.



Liceo Outdoor , available in armchair and armchair versions, has a solid construction in solid 100% FSC® iroko wood . Its natural color highlights the authenticity of the material, protected by an innovative treatment that makes it resistant to sun, humidity and inclement weather.



SO1561

Armchair with hand-strung seat and 4-leg solid iroko wood structure.



BU1562

Lounge chair with hand-strung seat and 4-leg solid iroko wood structure.

The three-piece curved backrest reflects the craftsmanship and intrinsic beauty of wood. The strung seat uses durable outdoor polypropylene rope, which highlights the distinctive character of its design and reflects the tradition of craftsmanship. The rope comes in an attractive graphite gray color, adding sophistication and versatility to the design aesthetic.



New versions

The Outdoor collections are not only renewed, they are also expanded with designs that transcend the barriers between indoor and outdoor space. We present renewed versions and new additions to the outdoor families, bringing the essence of design and comfort from the interior to outdoor spaces.

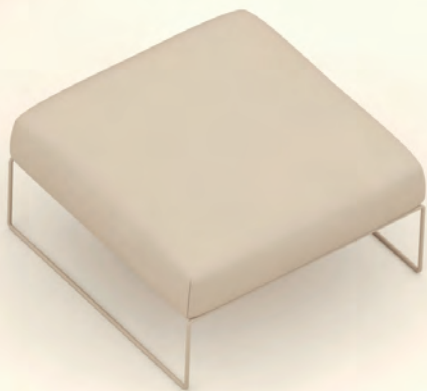
Among these additions, the Siesta, Dado and Sand sofas stand out, transporting the characteristic comfort of home to outdoor environments. Fusing elegance and functionality, these sofas stand as an oasis of comfort in any space. In a revitalized play of colors, the Trenza and Costa collections present new shades that transmit freshness and vitality to outdoor landscapes. From Costa stools to the sophisticated shades of Trenza, each piece is a statement of naturalness and aesthetics.

Tables, essential protagonists in the outdoor space, offer new options in collections such as Reverse, Proa, Solid and Status. Materials such as marble, natural stones, HPL compacts and technical stone are combined to create tables that are not only aesthetically beautiful, but also resistant outdoors.

In addition, Reverse Outdoor's 100% FSC® iroko wood bases and tops highlight our commitment to sustainability, ensuring that natural beauty and environmental responsibility converge harmoniously. These new outdoor versions are testimony to the constant search for innovation and excellence in the design of outdoor furniture.



SIESTA



SIESTA

74



LIEVORE ALTHERR MOLINA

Siesta

Lievore Altherr Molina

The Siesta modular sofa program redefines versatility with multiple configurations, from cozy armchairs to large sofas that include corner modules, footrest and side table. Its steel structure, exceptionally light and treated to resist inclement weather, is combined with the incorporation of new tones in reds, greens and blues to its attractive range of colors.

The upholstery, available in chromatic harmony or in striking contrasts adds a stylish and modern touch, providing comfort and elegance.

Siesta's rugged construction, by high-quality materials, ensures long-lasting performance even in adverse weather conditions. This modular program aims to create an inspiring and relaxing space, ideal for resting, chatting or reading at the end of the day. The word "Siesta" perfectly encapsulates its purpose: a welcoming and comfortable volume that floats on an extremely light linear structure.

Siesta adapts effortlessly to indoor and outdoor environments, maintaining harmony and warmth regardless of its configuration, whether with few or many modules. As a whole, Siesta offers a unique experience that fuses functionality, style and comfort in a harmonious and welcoming design.

SIESTA

76



LIEVORE ALTHERR MOLINA



SIESTA

78



LIEVORE ALTHERR MOLINA



SIESTA





SAND

82



LIEVORE ALTHERR MOLINA

Sand

Lievore Altherr Molina

Sand sofa redefines the concept of comfort in outdoor spaces. With its carefully crafted design, this sofa is not only comfortable and pleasant, but also offers great comfort in any outdoor environment. Available in 2 and 3-seater armchair and sofa options, it stands out for its versatility and adaptability to different space configurations. Made with a solid steel structure specially treated to resist outdoor conditions, this sofa guarantees durability and resistance to inclement weather. They add a touch of lightness to the design and allow easy combination with other elements of outdoor furniture.

Customization is key with the Sand sofa . Your seat cushions and backrest are removable , which offers multiple options to adapt style and aesthetics to individual preferences. From vibrant red hues to refreshing greens and serene blues, The color palette has been expanded with the introduction of new chromatic options proposed by experts such as Giulio Ridolfo.

Bringing comfort from inside to outside is a constant commitment. We have the best upholsterers to guarantee that every detail, from the structure to the upholstery, meets the highest standards quality. With the Sand sofa , the harmony between design and functionality merges together, providing a unique experience of outdoor comfort.

SAND

84



LIEVORE ALTHERR MOLINA



SAND

86



LIEVORE ALTHERR MOLINA



TRENZA

88



LIEVORE ALTHERR MOLINA

Trenza

Lievore Altherr Molina

The Trenza collection undergoes a chromatic revitalization inspired by the Mediterranean, incorporating red, green and blue tones that embody a lifestyle rooted in craftsmanship, experimentation, intuition and the intensity of the Mediterranean character. This contemporary redesign of a classic is reflected in a palette that evokes the essence of the sea that inspires it. The collection, which includes chairs, armchairs, stools and sun loungers, presents a distinctive continuous union of the seat with the backrest and a steel structure, which is stackable and visually light.

The sturdy steel frame not only provides an elegant look but also allows for efficient storage, making it a practical option for small spaces. Trenza not only preserves the essence of classic chairs, but also adapts to contemporary lifestyles, fusing the traditional craftsmanship of braiding with innovative materials and cutting-edge processes to offer a comfortable experience and resistance outdoors.

The colors, which are also offered in other collections in the outdoor catalogue, were created by Giulio Ridolfo, one of the most renowned specialists in the world in this work.

TRENZA

90



LIEVORE ALTHERR MOLINA



TRENZA

92



LIEVORE ALTHERR MOLINA



COSTA CHAIR

94



ESTUDIO ANDREU

Costa Chair

Estudio Andreu

This collection, which includes chair, armchair and lounge chair versions, has been expanded with stools with and without backrest, highlighting its versatility to adapt to private or corporate spaces. Specially designed for elevated areas and bar counters, they are ideal for social meeting points and collaborative spaces.

The fusion of a tubular aluminum structure without edges and double webbing in the seat and backrest creates a harmony of lightness, safety and comfort, contributing to general well-being.

The precise tailoring of this collection is reflected in the careful choice of sustainable and durable materials that guarantee strength and durability, with a long life cycle outdoors.

Constructed from a tubular aluminum structure with a four-legged base and double cinching in the seat and backrest, it provides comfort and evokes classic designs. Presented as a continuous line, without edges, in a graphic and natural way, this collection offers a perfect combination of form and function.

COSTA CHAIR







Gala Pure ECO®

Piergiorgio Cazzaniga

It is a chair that combines technology, sustainability and efficient design. Its development is based on cutting-edge sustainable materials and advanced injection technology of 100% recycled and recyclable thermopolymers. This allows the curvatures of the backrest, seat and arms to be adjusted ergonomically, making it an exceptionally comfortable and functional chair.

Its three-dimensional texture stands out, imitating the appearance of a plant bark, achieved through high-precision laser incision techniques. This texture provides a pleasant tactile and visual experience, while providing a greater sensation of support.

Conceived as an evolution of the Gala collection for outdoor use, its single-material design allows up to six chairs to be stacked efficiently. Key features of Gala Pure ECO® include its injected monobloc structure, available in an armchair version, suitable for outdoor use. It is made with Pure ECO® thermopolymer in a wide range of colors and uses gas-assisted injection technology to improve its resistance.

GALA PURE ECO®

100



PIERGIORGIO CAZZANIGA



Tables

Outdoor table collections offer a diverse range of options, fusing innovative design and functionality. Reverse Outdoor, evolution of the iconic Reverse table, stands out for its versatility with options for round, square and rectangular tops, now with a 100% FSC® certified iroko wood base, resistant to external conditions.

Solid Table Outdoor , recognized for its elliptical architecture and central base, It is presented as a versatile solution made of thermopolymer Pure ECO® 100% recycled. Its versatility is reflected in options of one or two bases, adapting to both interiors and exteriors.

Status Table Outdoor, with elliptical skate-shaped bases, offers Two-base table solutions for indoor and outdoor spaces. thermopolymer base guarantees resistance and sustainability.

wind Outdoor stands out for its versatility of finishes and resistance, offering elegant options with ceramic, compact HPL or iroko tops, which integrate perfectly with the Outdoor seating collections. Proa Outdoor, with its iconic and elliptical central base, stands out for its elegant design and functionality in outdoor spaces. Designed under principles circular economy, offers an attractive and sustainable option.

Color options are expanded for Solid, Status and Proa, with bases Pure ECO® in new shades: white, sand, dark grey, black and basalt. In addition, new compact HPL and terrazzo countertop options are added to other materials such as wood and glass, providing a versatile offer for home and outdoor work spaces.

REVERSE WOOD



103

PIERGIORGIO CAZZANIGA

REVERSE CONFERENCE

104



PIERGIORGIO CAZZANIGA



PROA

106



ESTUDIO ANDREU



SOLID

108



ESTUDIO ANDREU



STATUS

110



ESTUDIO ANDREU



WIND

112



LIEVORE ALTHERR MOLINA



Wovens and cords. Our outdoor furniture incorporates straps specially designed to resist outdoor conditions. These webbings and cords are durable and flexible, ensuring comfort and weather resistance. We carefully select materials that maintain their quality over time, even in the face of constant exposure to the elements.

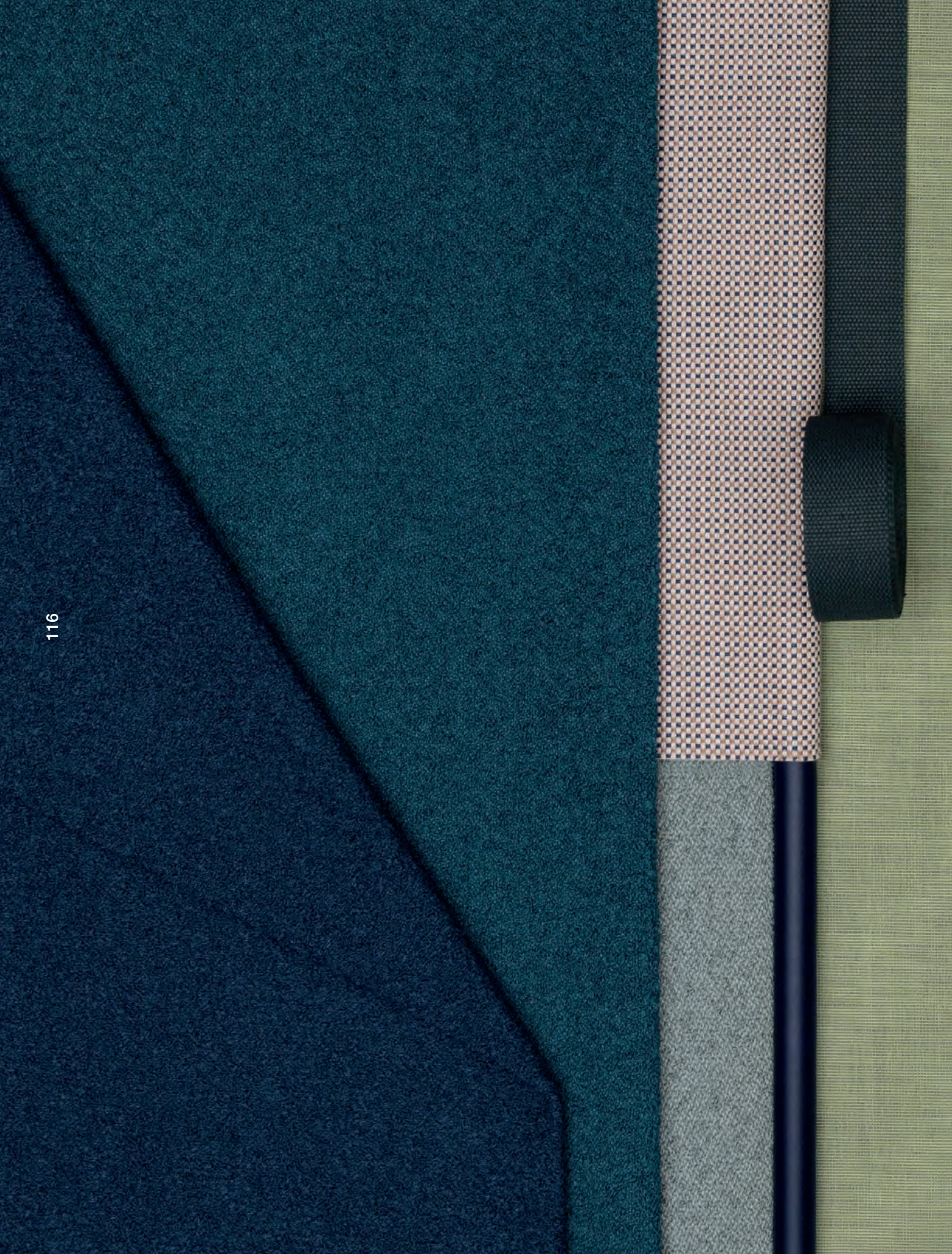
Fabrics. For fabrics, we opt for high-quality materials that offer resistance to fading and durability against sunlight and inclement weather conditions. These fabrics provide comfort and style, maintaining their attractive appearance despite adverse conditions.

Tops. Our outdoor tables feature surfaces designed for resistance to the outdoors and the effects of weather. We use natural and aesthetic materials and surfaces, resistant to scratches, stains and climate changes.

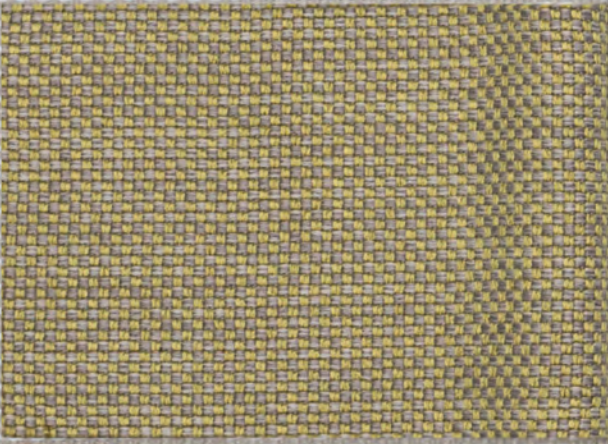
Metals. We use high quality metals, such as steel and 100% recyclable aluminum, treated with our innovative EPL5 process. This treatment provides protection against corrosion and UV rays, guaranteeing the durability of the furniture. Resistance to impact, deformation and chemicals ensures exceptional performance even in demanding environments.

Woods. We select 100% FSC® certified Iroko woods, ensuring that they come from sustainable sources. These woods offer a combination of natural beauty and resistance to climatic conditions. The special treatment applied protects against humidity, prolonging its useful life.

Foams. The foams used in outdoor furniture are carefully chosen to provide comfort and resilience. These foams retain their original shape despite exposure to sun and rain, offering comfortable and durable seating.

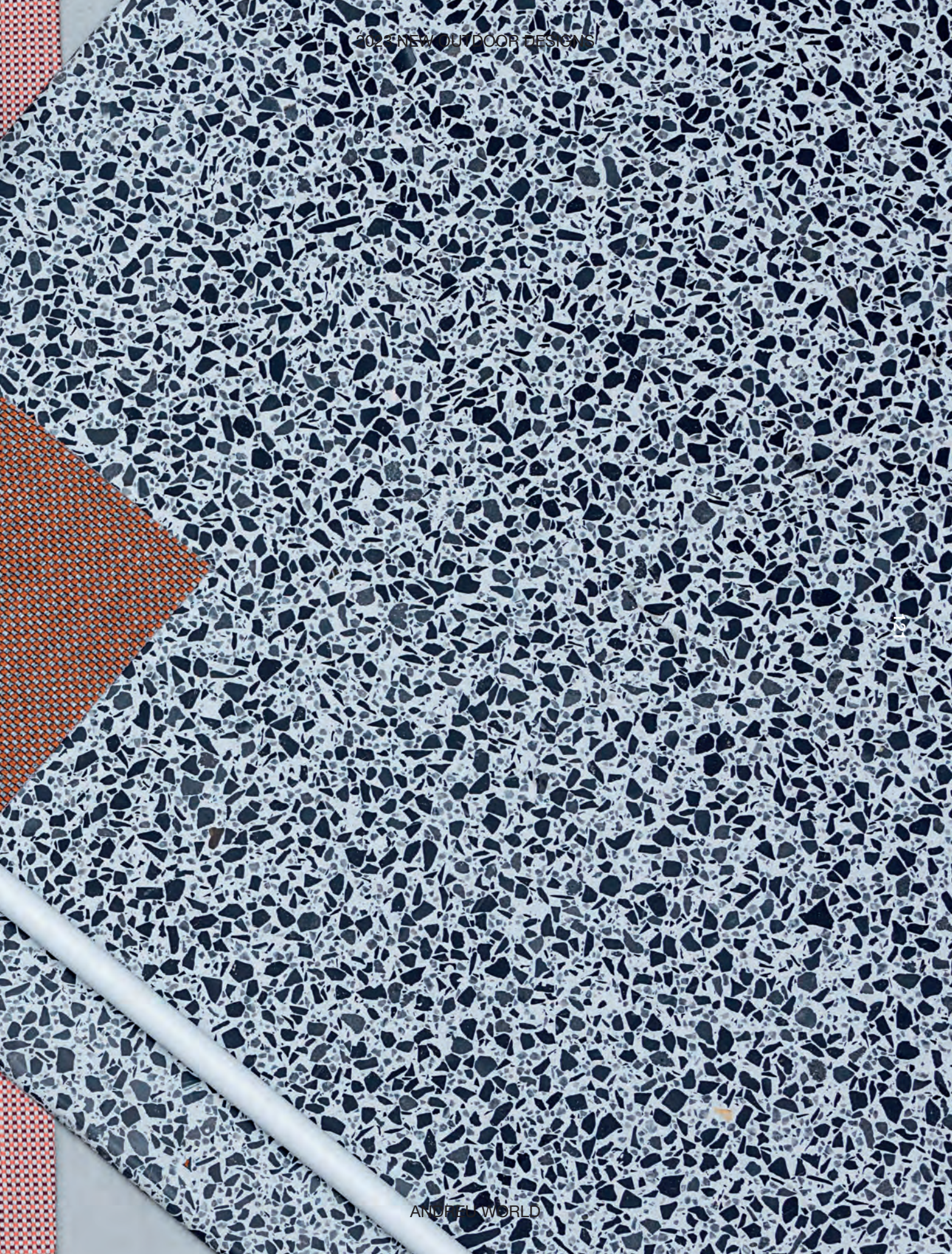












www.andreuworld.com